


## Bus Transportation Reminders

DO's	DON'Ts
<p><b>Be on time.</b> Arrive at the designated bus stop 10 minutes prior to the student's scheduled pick-up and drop off time.</p>	<p>Do not expect students to be pick-up/dropped off at a non-designated bus stop</p>
<p>Follow the dress code (See MBCEOCI HS/EHS Family Engagement Handbook).</p>	<p>Do not expect the bus to return your child's designated bus for late student pick-up or drop off.</p>
<p>Hold the child's hand while walking students to and away from the bus at drop off and pick up.</p>	<p>Do not (attempt to) delay the bus.</p>
<p>Make eye contact and wait for the driver's signal to you before crossing. Don't walk too close to the front of the <b>bus</b>. Always walk at least 10 feet in front of the bus.</p>	<p>Never run to, from, or behind the bus.</p>
<p>Stand back from the curb. Never stand close to the curb while waiting for the bus.</p>	<p>Do not allow students to bring food or beverages on the bus. Foods and beverages are prohibited.</p>
<p>Fully complete and submit required transportation and authorization forms immediately and prior to the first day of school.</p>	<p>Do not bring your student to the designated bus stop if he/she is sick.</p>
<p><b>100% ID check daily is enforced daily. Present a valid Georgia picture identification.</b></p>	
<p>If you cannot pick up your student, make necessary arrangements for the child to be picked up from the designated bus stop by an authorized adult aged 18 [or older] with a valid Georgia picture identification, Example: Driver's License.</p>	
<p>Call the center immediately if you are late picking up your child.</p>	
<p>Teach your child bus safety rules daily: Examples:</p> <ul style="list-style-type: none"> <li>▪ Always obey the driver and bus monitor.</li> <li>▪ Don't push or shove.</li> <li>▪ Stay in the assigned seat.</li> <li>▪ Don't yell or shout.</li> <li>▪ Always cross at least 10 feet in front of the bus.</li> <li>▪ Never crawl under a school bus.</li> <li>▪ Stay in the seatbelt.</li> </ul>	
<p>Student and parents/guardians should wear a mask at drop-off and pick-up.</p>	
<p>Be patient, courteous, and respectful to staff, students, and other parents at all times.</p>	
<p>Help us to help you. Contact your assigned Family Advocate or the Center Manager for assistance as needed.</p>	

## School Bus Safety Tips

# School Bus Safety Tips to Help Save Your Child's Life



According to the NHTSA, riding in a school bus is the safest way for your child to travel to and from school. However, the "danger zone" when approaching or leaving the bus poses the greatest risk for children. They should be especially careful in the area's in front, or on either side of the bus.

Children should also respect the bus driver and follow the rules while riding the bus and stay quietly seated on the ride to school. Here are a few school bus safety tips you can teach your child if he or she will be riding the bus to school this year:

### School Bus Safety Rules

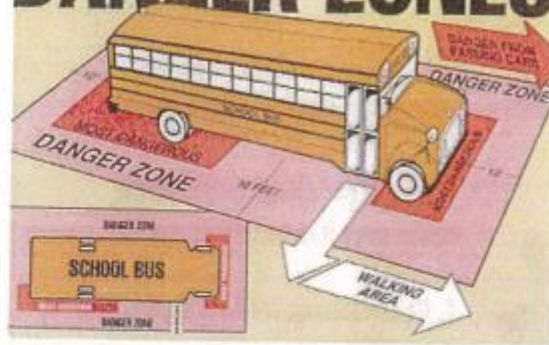
1. Do not get on the bus until the driver says it is safe to do so.
2. Ask the driver for help if you drop something while getting on or off the bus.
3. Once on the school bus, go directly to your seat and sit down, facing the front of the bus.
4. When exiting the bus, look around for cars before walking away or crossing the street.
5. Do not wait at the bus stop alone.
6. Use the handrails when getting on and off the bus.
7. If you miss the bus, don't run after it!

## School Bus Safety Tips

- Drive your child around the area near the bus stop, ensuring that your student is familiar with the route and knows where to get off the bus. Point out landmarks that are easily recognized to help your student know which stop is his or her stop. (Note: On afternoon routes, students are not let off a bus on cul-de-sac streets until the bus has completely turned around and is on its way out of the cul-de-sac.)
- Make sure your child understands that he shouldn't get off the bus if he is uncertain about his stop. The child should tell the driver he isn't sure. The school bus will take the student back to the school and contact the parents. This is particularly important for younger school-aged students (grades K-2) who are more likely to "follow the crowd" off the bus.
- Is your child a bus rider or a car rider, or does she go to daycare? Routines are important. Following a routine from the first day helps the student and the driver become familiar with each other and the bus route.
- Plan, if possible, with a group of other parents and adults in your neighborhood to have an adult present each morning and afternoon at the bus stop. When your student recognizes the adult "on duty" during the afternoon route, he will have a sense of reassurance that he has gotten to the correct stop.
- Parents, get to know your bus driver.
- Be visible at the bus stop by getting out of your car and standing with your child.
- Be at your bus stop 5 minutes early and only use your child's assigned stop.
- Encourage children to load and unload in an orderly line.
- Make sure hands are free and all your child's belongings are inside her bookbag.
- Teach your child to stay 12 feet from the street and never approach the bus unless it is completely stopped and the door is open.
- Teach your child never to step toward the bus until he looks to be sure all the traffic has stopped in both directions.
- Never assume approaching cars will stop!
- Teach your child to look for traffic before exiting the bus when unloading. She should then proceed in a straight line, in full view of the bus driver, directly to a safe location 12 feet away from the bus and the street.
- If your child must cross the street to load or unload a bus, teach him to always look for moving traffic. Cars may not stop! Your child should always keep eye contact with the bus driver and watch for the driver's signals.
- A child should never cross behind a bus or return to the bus after unloading.
- In the event that a child drops something near a bus advise her to gain the attention of the bus driver by waving her hands above her head from a safe distance, and to never attempt to retrieve the item without the full attention and instruction from the bus driver.
- A blowing bus horn means DANGER. Teach your child to look and find a safe place to go immediately.

In addition to raising awareness regarding bus safety and laws for drivers, MBEOC has placed cameras on buses as a deterrent for drivers who illegally pass school buses. When the school bus amber or red lights are flashing, the system automatically detects vehicles passing the stopped school bus, and records the violation. The violator will receive a citation in the mail.

# DANGER ZONES



*School bus transportation is safe. In fact, buses are safer than cars! Even so, last year, approximately 26 students were killed and another 9,000 were injured in incidents involving school buses. More often than not, these deaths and injuries didn't occur in a crash, but as the pupils were entering and exiting the bus.*



## SCHOOL BUS SAFETY TIPS

**Stay away from the bus until it comes to a complete stop and the driver signals you to enter.**

Stay away from the bus until the driver gives his/her signal that it's ok to approach.

**Keep a safe distance between you and the bus. Also, remember that the bus driver can see you best when you are back away from the bus.**

Have a safe place to wait for your bus, away from traffic and the street.

**Be aware of the street traffic around you.** Drivers are required to follow certain rules of the road concerning school buses, however, not all do.

When being dropped off, exit the bus and **walk ten giant steps** away from the bus.

Use the handrail to enter and exit the bus.

Protect yourself and watch out!

# SCHOOL BUS CAMERA SAFETY PROGRAM



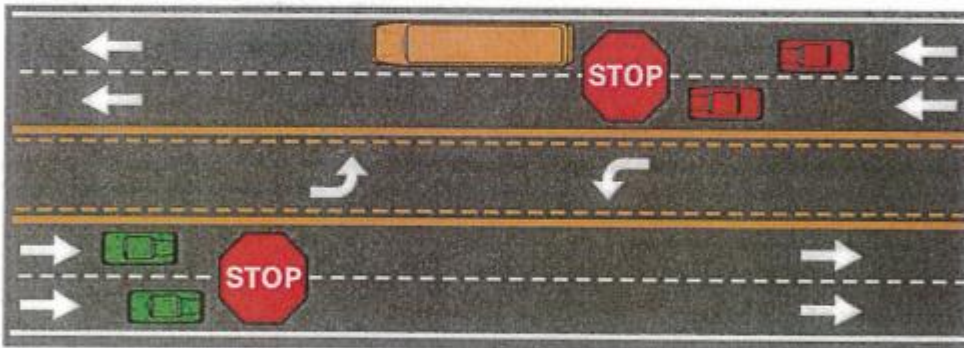
Macon-Bibb EOC, Inc would like to remind drivers of the rules they must follow when they encounter a school bus on the roadway. In February of 2019, Georgia lawmakers clarified the law to help keep children safe when they are loading or unloading school buses. Safety is a priority when it comes to transporting students and we all play a role in keeping kids safe.

These are examples of different roadways and how motorists should react to a stopped school bus, based on Georgia law.

Two-lane roadway: Vehicles traveling in both directions **must stop**.



Multi-lane roadway: With paved turning lane— vehicles traveling in both directions **must stop**.



Divided roadway: With dirt, grass, or barrier median— Vehicles traveling behind the bus **must stop**. Vehicles traveling in the opposite direction **must use caution**.

